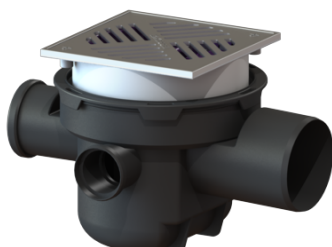


## The Universal basement drain DN 100, Stainless steel grating, Backwater protection



### Article information

Item no.: 27621  
 GTIN: 4026092007839  
 Price group: 10

### Advantages

- Flexible installation: vertically adjustable upper section rotatable
- tiltable
- vertically adjustable
- standard inlets
- Integrated backwater protection
- Flexible planning thanks to three fixed

### Description

The basement drain with three standard inlets (2x DN 50 / 1x DN 70) for faecal-free wastewater is equipped with two mechanical flaps which close automatically in the event of backwater. One flap serves at the same time as an emergency closure to be closed by hand.

Type of wastewater:	wastewater without sewage
Installation situation:	floor slab installation

### Version:

Odour trap:	included
Emergency closure:	yes
Delivery state:	installation-ready
Backwater protection:	Type 5
Number of mechanical backwater flaps:	2

### General characteristics:

Nominal size (DN):	100
Outer diameter (OD):	110
Colour:	black
Standard:	EN 1253, EN 13564

**Dimensions:**

Length:	380 mm
Width:	300 mm
Cutout dimension, length:	400 mm
Cutout dimension, width:	320 mm

**Tank:**

Installation depth:	216 - 266 mm
---------------------	--------------

**Drain body:**

Socket version:	lateral
Vertical adjustment:	vertically adjustable upper section

**Coverage features:**

Type of cover:	Slotted cover
Cover material:	304 stainless steel
Colour of cover:	silver
Load class:	K 3 (EN 1253-1)
Sludge bucket:	yes

**Grating:**

Grid size, width:	187 mm
Grid size, height:	4 mm
Grid size, length:	187 mm