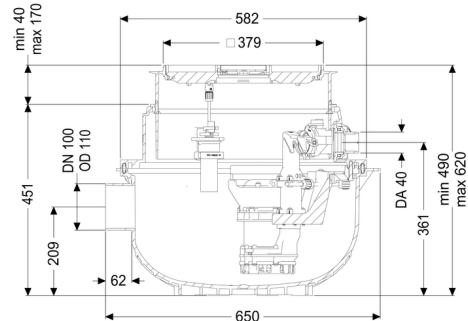


## Lifting station Aqualift S Compact Duo, GTF 500, resistant, Floor sl., tileable



### Article information

Item no.: 280530XC  
 GTIN: 4026092082713  
 Price group: 20

### Advantages

- System resistant to media containing salt and wastewater from water softening units
- System ready to plug in
- Quiet operation, as the pump installation does not cause any structure-borne sound emissions.

### Description

The ready to plug in lifting station for faecal-free wastewater is equipped with a submersible pump and a backflow preventer. The collection tank made of permanently resistant polymer (PE) has an open pump tank. One-handed closures enable easy removal of the integrated components. The system for installation in the floor slab is preassembled for final installation on site.

The station is controlled optionally by a float switch (Mono) or a user-friendly control unit (Tronic and Duo), which are optionally integrated in the building management system via a potential-free contact or alarm and collective fault messages can be output via a GSM interface.

- with telescopic upper section for continuously adjustable height and level compensation and integrated floor drain
- collection tank made of PE, resistant to aggressive wastewater and 3 m groundwater
- including backflow preventer for the pressure pipe
- including sockets for inlet and cable conduit
- pump with multi-vane impeller for maximum operating reliability

Type of wastewater:

wastewater without sewage

Installation situation:

floor slab installation

**Version:**

|                     |  |
|---------------------|--|
| Type of system:     | Twin pump station  |
| Pump control:       | Control unit   |
| Backflow preventer: | integrated   |
| Resistant:          | Resistant to saline media, wastewater from water softening systems and wastewater containing condensate from heating systems |
| Delivery state:     | Installation-ready (connection parts must be connected on site)  |

**General characteristics:**

|           |            |
|-----------|------------|
| Colour:   | black      |
| Standard: | EN 12050-2 |

**Dimensions:**

|         |        |
|---------|--------|
| Length: | 617 mm |
| Width:  | 585 mm |

**Tank:**

|                                |                                     |
|--------------------------------|-------------------------------------|
| Inlet nominal size (DN):       | 100                                 |
| Pumping volume:                | 20 l                                |
| Pressure pipe connection (DN): | 32 mm                               |
| Pressure pipe connection (OD): | 40 mm                               |
| Installation depth:            | 490 - 620 mm                        |
| Vertical adjustment:           | vertically adjustable upper section |

**Coverage features:**

|                       |                      |
|-----------------------|----------------------|
| Type of cover:        | tileable cover plate |
| Cover material:       | Polymer              |
| Colour of cover:      | silver grey          |
| Drainage function:    | yes                  |
| Max. flooring height: | 16 mm                |
| Load class:           | K 3 (EN 1253-1)      |
| Length:               | 366 mm               |
| Width:                | 366 mm               |
| Locking:              | Lock & Lift          |
| Free passage:         | 10 mm                |

**Pumping device:**

|  |                                |
|--|--------------------------------|
| Pump:  | GTF 500 resistant              |
| Number of pumps:                                   | 2                              |
| Max. pumping capacity:                             | 10 m <sup>3</sup> /h           |
| Max. pumping height:                               | 8 m                            |
| Operating voltage:                                 | 230 V                          |
| Mains frequency:                                   | 50 Hz                          |
| Operating mode:                                    | S1                             |
| Power P1:  | 0.6 kW                         |
| Power P2:  | 0.36 kW                        |
| Speed:   | 2,800 U/min                    |
| Type of fuse required (electrical protection):     | C 16 A                         |
| Max. temperature (permanent) of conveyed material: | 40 °C                          |
| Connection type:                                   | coded plug                     |
| Impeller type:                                     | Multi-vane impeller            |
| Length of mains cable for pump:                    | 5 m                            |
| Rated current:                                     | 2.7 A                          |
| Protection class (pump):                           | IP 68 (3m)                     |
| Type of pump connection cable:                     | H07RN-F 3G 1.0 mm <sup>2</sup> |
| Temperature monitoring:                            | integrated                     |

**Control:**

|   |                |
|---|----------------|
| Control unit:                           | Comfort        |
| Operating voltage:                      | 230 V          |
| Mains frequency:                        | 50 Hz          |
| Self-diagnosis system (SDS):            | yes            |
| Battery buffering:                      | yes            |
| Multi-line display:                     | yes            |
| Log book function:                      | yes            |
| USB interface:                          | yes            |
| GSM interface:                          | yes            |
| Potential-free contact:                 | optional       |
| Protection class control unit:          | IP 54          |
| Connection type:                        | coded plug     |
| Length of mains cable for control unit: | 1.4 m          |
| Type of level measurement:              | pneumatic      |
| Level measurement instrument:           | Immersion pipe |
| Alarm sensor:                           | optical probe  |