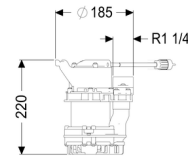
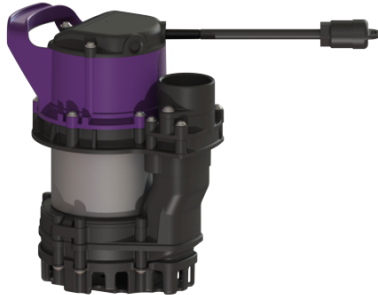


## Submersible pump Aquadive GTF 500 resistant, without float switch, 10 m



### Article information

Item no.: 280750  
 GTIN: 4026092082522  
 Price group: 20

### Description

Submersible pump GTF 500 resistant, for faecal-free wastewater

- housing made of corrosion and acid-resistant polymer/stainless steel
- resistant to saline media and condensate from condensing boiler systems
- with longitudinally watertight, moulded connection cable
- with removable intake cage and carry handle
- with vertical pressure pipe connection
- with multi-vane impeller for maximum operating reliability
- with integrated low-level suction

Type of wastewater: wastewater without sewage

### General characteristics:

Material: Polymer  
 Standard: EN 12050-2

### Dimensions:

Length: 185 mm  
 Width: 120 mm  
 Height: 220 mm

Pressure pipe connection:	R 1 1/4"
Free passage:	10 mm

#### **Pumping device:**

Pump:	GTF 500
Number of pumps:	1
Max. pumping capacity:	12 m <sup>3</sup> /h
Max. pumping height:	8 m
Operating voltage:	230 V
Mains frequency:	50 Hz
Operating mode:	S1
Power P1:	500 kW
Power P2:	360 kW
Speed:	2,800 U/min
Type of fuse required (electrical protection):	C 16 A
Max. temperature (permanent) of conveyed material:	40 °C
Connection type:	Schuko (earthed contact) 2-pin
Weight:	6 kg
Impeller type:	Multi-vane impeller
Length of mains cable for pump:	10 m
Rated current:	2.5 A
Protection class (pump):	IP 68 (3m)
Protection class:	I
Type of pump connection cable:	H07RN-F 3G 1.0 mm <sup>2</sup>
Temperature monitoring:	integrated
Cos phi - power factor:	0.91
Insulation class:	F
Cable length:	10 m