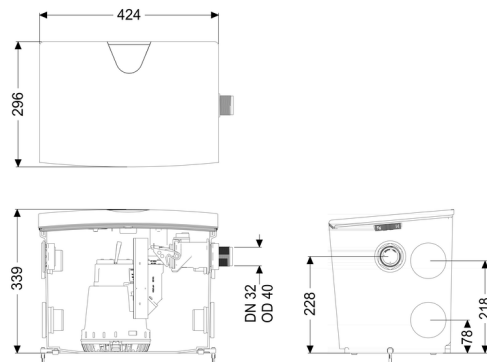
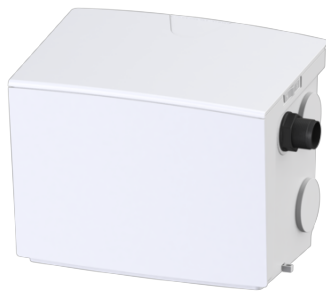


Lifting station Minilift S KTP 300, free-standing set-up



Article information

Item no.: 28561
 GTIN: 4026092096970
 Price group: 20

Description

Type of wastewater: wastewater without sewage
 Installation situation: free-standing set-up

Version:

Type of system: Single station
 Pump control: Float switch
 Backflow preventer: integrated
 Ventilation: Activated carbon filter
 Delivery state: plug-in ready

General characteristics:

Colour: white
 Standard: EN 12050-2

Dimensions:

Length: 425 mm
 Width: 300 mm
 Height: 340 mm

Tank:

Number of inlets:	5 ST
Inlet nominal size (DN):	40
Tank volume:	30 l
Pumping volume min.:	5 l
Pumping volume max.:	12 l
Pressure pipe connection:	horizontal
Pressure pipe connection (DN):	32 mm
Pressure pipe connection (OD):	40 mm
Free passage:	10 mm

Pumping device:

Pump:	KTP 300
Number of pumps:	1
Max. pumping capacity:	8 m ³ /h
Max. pumping height:	6 m
Operating voltage:	230 V
Mains frequency:	50 Hz
Operating mode:	S1
Power P1:	0.34 kW
Power P2:	0.21 kW
Speed:	2,800 U/min
Type of fuse required (electrical protection):	C 16 A
Max. temperature (permanent) of conveyed material:	40 °C
Hot water resistance for a short time (2 min):	80 °C
Connection type:	Schuko (earthed contact) 2-pin
Weight:	4.5 kg
Impeller type:	Multi-vane impeller
Length of mains cable for pump:	5 m
Rated current:	1.6 A
Protection class (pump):	IP 68 (3m)
Protection class:	I
Type of pump connection cable:	H07RN-F 3G 1.5 mm ²
Temperature monitoring:	integrated

Control:

Type of level measurement:	mechanical
Level measurement instrument:	Float switch