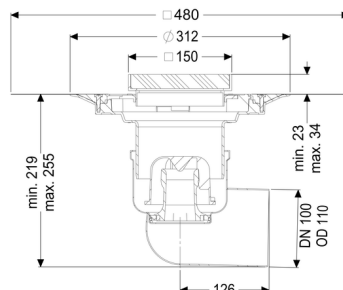
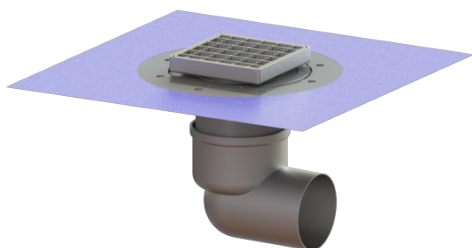


## Ferfix floor drain DN 100, horiz., Waterproofing layer, Slotted grating



### Article information

Item no.: 54420.21  
GTIN: 4026092056370  
Price group: 70

### Advantages

- Made of particularly hygienic and mechanically highly resistant stainless steel

### Description

The Ferfix stainless steel floor drain is used for point drainage and is equipped with a removable odour trap made of stainless steel, a lip seal and a temporary protective cover.

The outlet socket is suitable for connection to SML cast iron pipes.

### Version:

|   |   |
|---|---|
| System:                                   | 125   |
| Odour trap:                               | included  |
| Type of waterproofing layer:              | Waterproofing layer   |
| Waterproofing layer on the upper section: | Enclosed sealing collar to be glued (bd) according to DIN 18534 |
| Waterproofing layer on the drain body:    | Connection flange   |
| Sealing water height:                     | 50 mm   |

### General characteristics:

|                      |           |
|----------------------|-----------|
| Nominal size (DN):   | 100       |
| Outer diameter (OD): | 110       |
| Standard:            | EN 1253-1 |

**Dimensions:**

|         |        |
|---------|--------|
| Length: | 196 mm |
| Width:  | 142 mm |

**Tank:**

|                    |      |
|--------------------|------|
| Number of outlets: | 1 ST |
|--------------------|------|

**Drain body:**

|                         |                                     |
|-------------------------|-------------------------------------|
| Material of drain body: | Stainless steel 14301               |
| Socket version:         | lateral                             |
| Vertical adjustment:    | vertically adjustable upper section |
| Vertical adjustment:    | 23 - 40 mm                          |
| Upper section:          | adjustable in three dimensions      |

**Coverage features:**

|                 |                       |
|-----------------|-----------------------|
| Type of cover:  | Slotted grating       |
| Cover material: | Stainless steel 14301 |
| Load class:     | L 15 (EN 1253-1)      |
| Length:         | 138 mm                |
| Width:          | 138 mm                |
| Surface:        | pickled               |
| Locking:        | unlocked              |

**Grating:**

|                         |        |
|-------------------------|--------|
| Rim length:             | 150 mm |
| Rim width:              | 150 mm |
| Shape of upper section: | square |
| Upper section material: | ABS    |