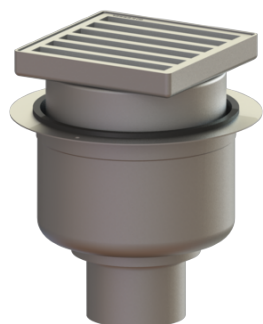


Ferrofix floor drain Sys 200, vertical, Ladd grt



Article information

Item no.: 55400.30
 GTIN: 4026092009994
 Price group: 70

Advantages

- Made of particularly hygienic and mechanically highly resistant stainless steel

Description

The Ferrofix stainless steel floor drain is used for point drainage and is equipped with a removable odour trap, a lip seal and a temporary protective cover.

The outlet socket is suitable for connection to SML cast iron pipes.

Version:

System:	200
Odour trap:	included
Waterproofing layer on the upper section:	Connection flange
Waterproofing layer on the drain body:	Connection flange
Sealing water height:	70 mm

General characteristics:

Nominal size (DN):	100
Outer diameter (OD):	110
Standard:	EN 1253-1

Dimensions:

Length:	280 mm
Width:	280 mm

Tank:

Number of outlets:	1 ST
--------------------	------

Drain body:

Material of drain body:	Stainless steel 14301
Socket version:	vertical
Vertical adjustment:	vertically adjustable upper section
Upper section:	vertically adjustable

Coverage features:

Type of cover:	Ladder grating
Cover material:	Stainless steel 14301
Load class:	M 125 (EN 1253-1)
Length:	190 mm
Width:	190 mm
Height:	30 mm
Surface:	pickled
Locking:	unlocked

Grating:

Rim length:	200 mm
Rim width:	200 mm
Shape of upper section:	square
Upper section material:	Stainless steel 14301