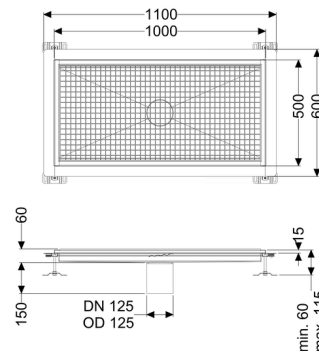
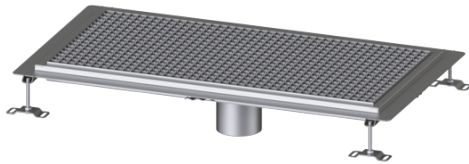


Ferrofix floor tray glued flange H: 15mm, 500x1000mm



Article information

Item no.: 6050100
 GTIN: 4026092054710
 Price group: 80

Advantages

- Made of particularly a hygienic and mechanically highly resistant stainless steel
- Variably combinable with suitable drain bodies

Description

The Ferrofix floor tray made of stainless steel with a material thickness of 2.0 mm (pickled in the immersion bath) is equipped with polished visible ridges, longitudinal and transverse slopes, feet for height adjustment and stainless steel outlet nozzles.

The tray profile is suitable for joint sealing and has a circumferential adhesive edge (15 mm deep and 50 mm folded outwards) with welded mitres.

Waterproofing layer on the upper section:	Adhesive flange (suitable for moisture barriers)
Water exposure class in accordance to DIN 18534-1 (up to and including):	W3-I

General characteristics:

Nominal size (DN):	125
Outer diameter (OD):	125

Dimensions:

Length:	1,000 mm
Width:	500 mm
Height:	60 mm

Coverage features:

Type of cover:	Slotted grating
Colour of cover:	silver
Load class:	L 15 (EN 1253-1)
Locking:	placed
Upper section material:	Stainless steel 14301