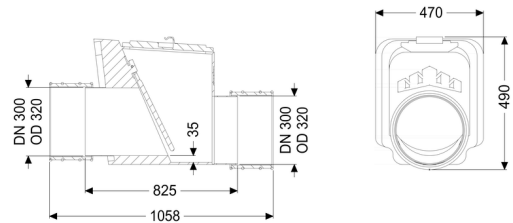
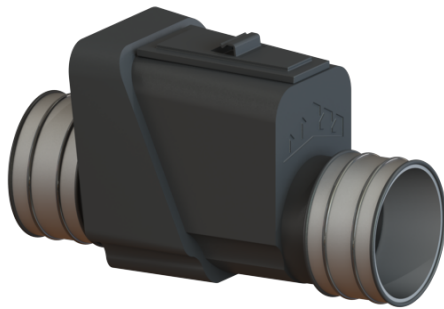


## Backwater valve Multitube DN 300, 1 flap



### Article information

Item no.: 71300  
GTIN: 4026092011614  
Price group: 10

### Advantages

- Inlet and outlet with pipe clamp
- Bridgeable outer diameter at least nominal width + 20 mm
- Simple maintenance and cleaning

### Description

The backwater valve for rainwater is equipped with a mechanical flap which closes automatically in the event of backwater.

Type of wastewater:	wastewater without sewage
Installation situation:	underground installation
Delivery state:	installation-ready
Number of mechanical backwater flaps:	1

### General characteristics:

Nominal size (DN):	300
Outer diameter (OD):	320
Note on nominal size:	Bridgeable outer diameter of pipe clamps
Colour:	black

### Dimensions:

Length:	825 mm
Width:	470 mm
Height:	490 mm

Vertical drop between inlet and outlet:	35 mm
Cover locking:	screwed

