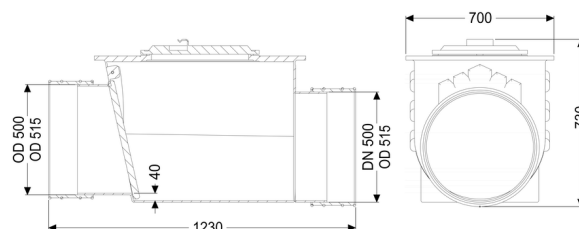
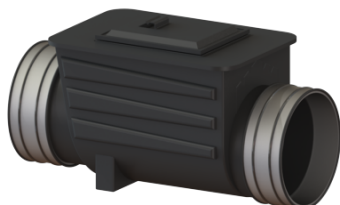


## Backwater valve Multitube DN 500, 1 flap



### Article information

Item no.: 71500  
GTIN: 4026092011638  
Price group: 10

### Advantages

- Inlet and outlet with pipe clamp
- Bridgeable outer diameter at least nominal width + 20 mm
- Simple maintenance and cleaning

### Description

The backwater valve for rainwater is equipped with a mechanical flap which closes automatically in the event of backwater.

Type of wastewater:

wastewater without sewage

Installation situation:

underground installation

Delivery state:

installation-ready

Number of mechanical backwater flaps:

1

### General characteristics:

Nominal size (DN):

500

Outer diameter (OD):

515

Note on nominal size:

Bridgeable outer diameter of pipe clamps

Colour:

black

### Dimensions:

Length:

1,230 mm

Width:

700 mm

Height:

730 mm

Vertical drop between inlet and outlet:

40 mm

Cover locking:

screwed

