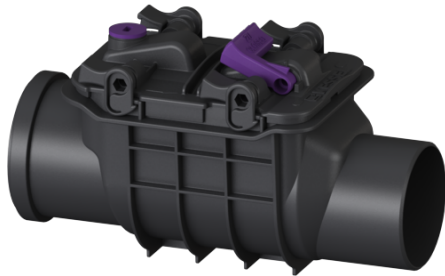


## Backwater valve Staufix Basic



### Article information

Item no.: 77100  
GTIN: 4026092011294  
Price group: 10

### Advantages

- Simple conversion possible using conversion kits
- Optional rat protection flap for additional safety
- Fast and toolless maintenance and cleaning

### Description

The backwater valve for wastewater without sewage is equipped with one mechanical flap which closes automatically in the event of backwater and also serves as an emergency closure to be closed by hand.

Thanks to the modular KESSEL system, existing systems can easily be supplemented by a second backwater flap.

Type of wastewater:	wastewater without sewage
Installation situation:	exposed drainage pipe

### Version:

Stainless steel flap as rat protection:	no
Emergency closure:	yes
Delivery state:	installation-ready
Backwater protection:	Type 1
Number of mechanical backwater flaps:	1

### General characteristics:

Outer diameter (OD):	100
Standard:	EN 13564

### Dimensions:

Length:	355 mm
Width:	155 mm
Height:	205 mm

Vertical drop between inlet and outlet:

9 mm

Cover locking:

Quick-release closure