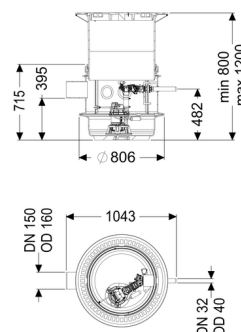


## Pumping station Aquapump Medium Duo, STZ 1000, 1800-2250 mm, D



### Article information

Item no.: 826731D  
GTIN: 4026092052211  
Price group: 60

### Advantages

- height-adjustable upper section

### Description

The pumping station for faecal wastewater is suitable for underground installation and is equipped with a non-return flap for the pressure pipe. The PE-LLD tank is resistant to aggressive media and can be delivered with load class A, B or D covers. The pump with macerator ensures maximum operating reliability. The components are pre-assembled for final assembly on site. Including openings for ventilation and cable duct.

Type of wastewater:

wastewater with and without sewage

Installation situation:

underground installation

### Version:

Type of system:

Twin pump station

Installation:

Wet installation

Pump control:

Control unit

Backflow preventer:

integrated

Access steps:

no

Passage seal for ventilation pipe (DN):

100 mm

Passage seal for conduit pipe (DN):

100 mm

### General characteristics:

Standard:

EN 12050-1

**Dimensions:**

Length:	1,000 mm
Width:	806 mm
Diameter:	809 mm
Clear width (LW):	600

**Tank:**

Number of inlets:	1 ST
Inlet nominal size (DN):	150
Distance pipe bottom inlet to tank bottom:	400 mm
Distance from centre of outlet pipe to tank bottom:	1,394 mm
Distance from centre of inlet pipe to tank bottom:	475 mm
Connection conduit pipe (DN):	100 mm
Pumping volume:	30 l
Pressure pipe connection:	horizontal
Pressure pipe connection (DN):	32 mm
Pressure pipe connection (OD):	40 mm
Installation depth:	1,800 - 2,250 mm
Venting connection (DN):	100 mm
Groundwater resistant from lower edge of base section:	2,500 mm
Clear width of tank (LW):	600 mm
Chamber system:	LW 600

**Coverage features:**

Type of cover:	Round cover plate
Cover material:	Grey iron with concrete filling
Load class:	D 400 (EN 124)

**Pumping device:**

Pump:	STZ 1000
Number of pumps:	2
Max. pumping capacity:	11.5 m <sup>3</sup> /h
Max. pumping height:	10 m
Operating voltage:	230 V
Mains frequency:	50 Hz
Operating mode:	S3 - 50 %
Power P1:	1.2 kW
Power P2:	0.69 kW
Speed:	2,800 U/min

Type of fuse required (electrical protection):	C 16 A
Max. temperature (permanent) of conveyed material:	40 °C
Connection type:	Schuko (earthed contact) 2-pin
Weight:	10 kg
Impeller type:	Macerator
Length of mains cable for pump:	10 m
Rated current:	5.2 A
Protection class (pump):	IP 68 (3m)
Protection class:	I
Insulation class:	F

### Control:

Control unit:	Comfort
Operating voltage:	230 V
Mains frequency:	50 Hz
Self-diagnosis system (SDS):	yes
Battery buffering:	yes
Multi-line display:	yes
Log book function:	yes
USB interface:	yes
GSM interface:	yes
Potential-free contact:	yes
Motor protection switch:	yes
Protection class control unit:	IP 54
Type of level measurement:	pneumatic
Level measurement instrument:	Submersible pressure switch
Alarm sensor:	optical probe