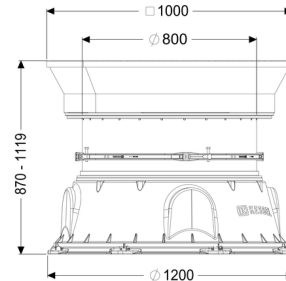
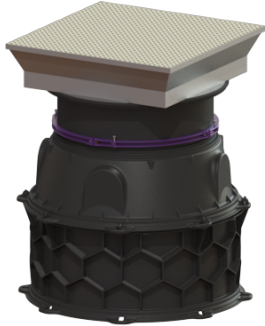


Chamber module LW 1000 ground Access LW 800, 870-1119 mm, Class B



Article information

Item no.: 8740142
GTIN: 4026092070086
Price group: 60

Advantages

- For modular assembly with simple connection segments and intermediate sections 250 and 500 mm high
- Innovative honeycomb structure
- Installation in groundwater up to 3000 mm
- Vertically adjustable upper section available in LW 600 and LW 800 from class K 3 to class D
- ideal for scoring up to DN 150
- lift-protected

Description

The chamber module for wet or dry installation is equipped with fitted access steps in accordance with DIN EN 13101 and BGR 177, all the necessary seals and connecting wedges as well as a taper with vertically adjustable upper section. The intermediate sections made of permanently resistant polymer (PE) have universal connection possibilities.

Thanks to the modular KESSEL system, the design can be flexibly combined with intermediate sections, taper, upper section and cover.

Installation situation:

underground installation

Delivery state:

Partly for on-site assembly (access steps have been pre-mounted in the factory)

General characteristics:

Colour:	black
Standard:	EN 13598-2
Approval:	Z-42.1-527

Dimensions:

Length:	1,200 mm
Width:	1,200 mm

Tank:

Inlet max. scoring (DN):	150 mm
Installation depth:	870 - 1,119 mm
Groundwater resistant from lower edge of base section:	3,000 mm
Clear width of tank (LW):	1,000 mm
Clear width of entry (LW):	800 mm
Vertical adjustment:	vertically adjustable upper section

Coverage features:

Type of cover:	Rectangular cover plate
Cover material:	Stainless steel
Load class:	B 125 (EN 124)
Length:	1,096 mm
Width:	1,005 mm
Height:	245 mm
Tightness:	surface water resistant
Surface:	anti-slip
Locking:	locked