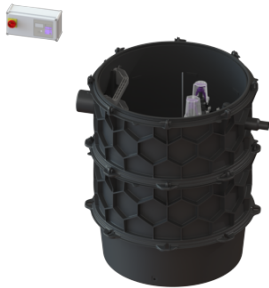


Pumping station Aquapump XL Duo, GTK 2600-S1



Article information

Item no.: 8743030
 GTIN: 4026092075845
 Price group: 60

Advantages

- Maximum safety
- Flexible installation
- Also handles large quantities of faecal-free wastewater

Description

The pumping station for faecal-free wastewater is equipped with a submersible pump and a backflow preventer. The collection tank made of permanently resistant polymer (PE) has an open pump tank with universal connection options. Quick-release closures enable the integrated components to be removed easily.

The station is controlled by a user-friendly control unit, which is optionally integrated in the building management system via a potential-free contact. Alternatively, alarm and collective fault messages can be output via a GSM interface.

The KESSEL modular system provides different engineering chamber options as accessories for the further layout.

Stainless steel pump removal chains available as accessory for each installation depth - Article number:

680528 = Length 2 m

680529 = Length 3 m

680530 = Length 4 m

680531 = Length 5 m

Type of wastewater:

wastewater without sewage

Installation situation:

underground installation, floor slab installation

Version:

Type of system:

Twin pump station

Installation:

Wet installation

Shut-off valve:

Shut-off valve made of polymer

Pump control:

Control unit

Backflow preventer:

integrated

| | |
|---|--|
| Access steps: | yes |
| Note on installation depth: | in combination with a chamber module |
| Passage seal for ventilation pipe (DN): | 100 mm |
| Passage seal for conduit pipe (DN): | 100 mm |
| Delivery state: | Pre-mounted for final assembly on site (pumps and sensor system must be fitted on site and control unit must be connected) |

General characteristics:

| | |
|-----------|------------|
| Colour: | black |
| Standard: | EN 12050-2 |

Dimensions:

| | |
|---------|----------|
| Length: | 1,370 mm |
| Width: | 1,240 mm |
| Height: | 1,416 mm |

Tank:

| | |
|--|------------|
| Number of inlets: | 1 ST |
| Inlet nominal size (DN): | 150 |
| Inlet nominal size (OD): | 160 mm |
| Inlet max. scoring (DN): | 150 mm |
| Distance pipe bottom inlet to tank bottom: | 1,054 mm |
| Distance from centre of outlet pipe to tank bottom: | 1,134 mm |
| Distance from centre of inlet pipe to tank bottom: | 1,134 mm |
| Pumping volume: | 340 l |
| Pressure pipe connection: | horizontal |
| Pressure pipe connection (DN): | 80 mm |
| Pressure pipe connection (OD): | 90 mm |
| Groundwater resistant from lower edge of base section: | 3,000 mm |
| Clear width of tank (LW): | 1,000 mm |

Pumping device:

| | |
|------------------------|----------------------|
| Pump: | GTK 2600 |
| Number of pumps: | 2 |
| Max. pumping capacity: | 71 m ³ /h |
| Max. pumping height: | 19.6 m |
| Operating mode: | S1 |
| Power P1: | 2.6 kW |

| | |
|--|--------------------------------|
| Power P2: | 2.1 kW |
| Speed: | 2,900 U/min |
| Max. temperature (permanent) of conveyed material: | 40 °C |
| Connection type: | Direct connection |
| Weight: | 40 kg |
| Impeller type: | Single-vane impeller |
| Length of mains cable for pump: | 10 m |
| Rated current: | 4.5 A |
| Protection class (pump): | IP 68 (20m) |
| Protection class: | I |
| Type of pump connection cable: | H07RN-F 7G 1.5 mm ² |
| Temperature monitoring: | integrated |
| Cos phi - power factor: | 0.81 |
| Insulation class: | H |

Control:

| | |
|--|--------------|
| Control unit: | Comfort |
| Operating voltage: | 400 V |
| Mains frequency: | 50 Hz |
| Self-diagnosis system (SDS): | yes |
| Battery buffering: | yes |
| Multi-line display: | yes |
| Log book function: | yes |
| GSM interface: | yes |
| Potential-free contact: | yes |
| Type of fuse required (electrical protection): | 3 x C 16 A |
| Motor protection switch: | yes |
| Protection class control unit: | IP 54 |
| Length of mains cable for control unit: | 0 m |
| Type of level measurement: | hydrostatic |
| Level measurement instrument: | Level sensor |
| Alarm sensor: | Level sensor |