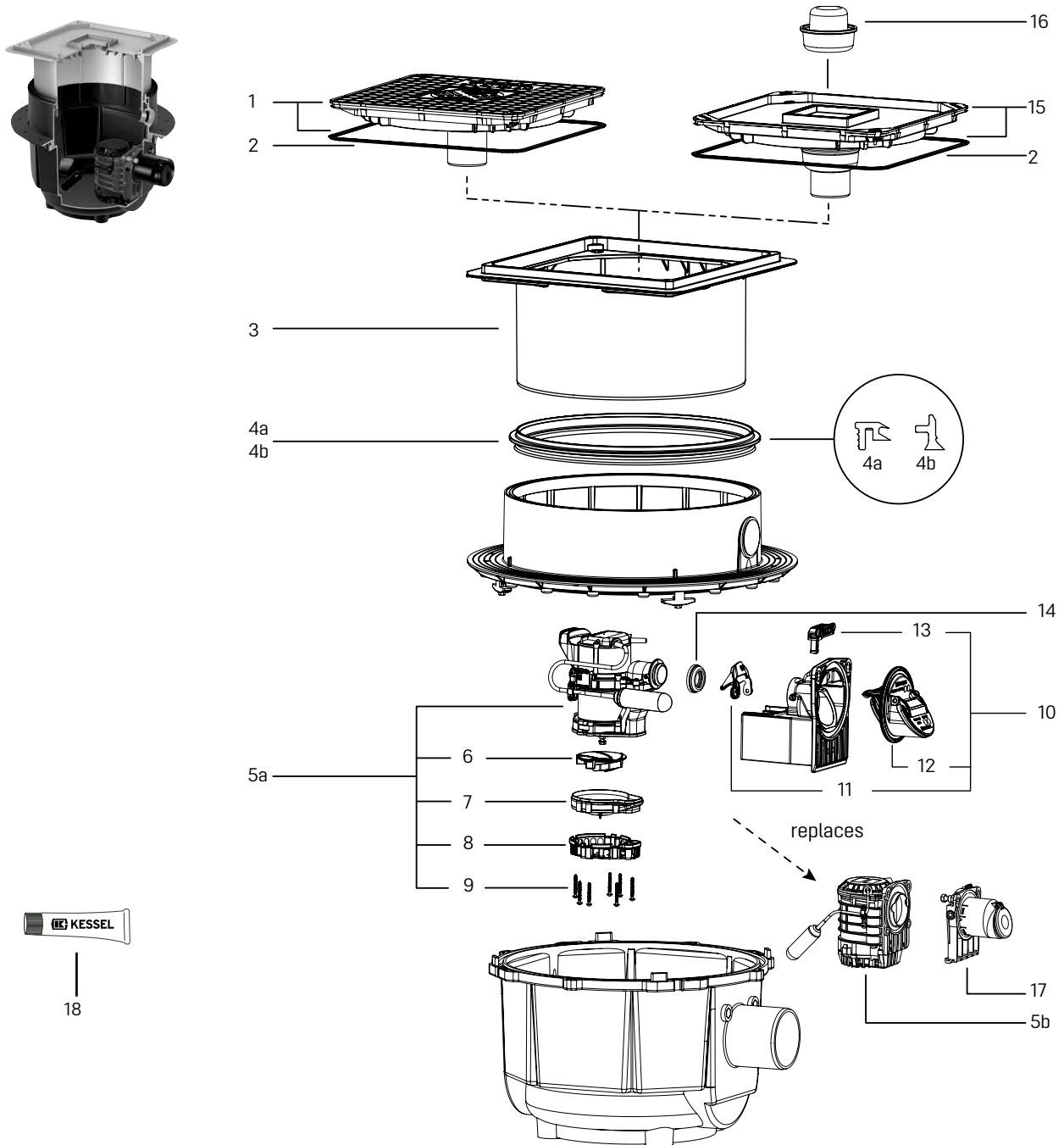


# Backwater pumping station *Pumpfix S*

Installation in the floor slab, up to model year 01/2020



Item	Designation	Art. no.	Item	Designation	Art. no.
1	Cover plate, black, with drain and seal	83 046	8	Intake cage for GTF 500	680 770
2	Seal for cover plate 384 × 384 mm	680 025	9	Screw set for intake cage GTF 500	680 769
3	Upper section, height-adjustable up to 180 mm	83 061	10	Flap housing with 2 backwater flaps and emergency closure	680 829
4	Seal for upper section		11	One-handed closure for backflow preventer	680 018
4a	up to model year 06/2014	680 026	12	Slide-in flap housing with two backwater flaps	680 884
4b	beginning model year 07/2014	680 150	13	Emergency closure lever for flap housing, incl. seals	680 883
5a	Replacement pump GTF 500 with float switch	680 828	14	Seal for pressure pipe connection	680 067
5b	Replacement pump with odour trap and float switch	*	15	Cover plate, tileable with drain and seal	83 055
6	Multi-vane impeller for GTF 500	680 767	16	Odour trap, sealing water height 50 mm	47 200
7	Spiral housing for GTF 500	680 768	17	Backwater valve, module for <i>Pumpfix S</i> with two flaps	28 004
			18	High-performance grease for backwater valves, 12 g	681 001

\* In case of pump replacement, the successor pump (art. no. 680 828) and successor adapter (art. no. 680 829) are required.