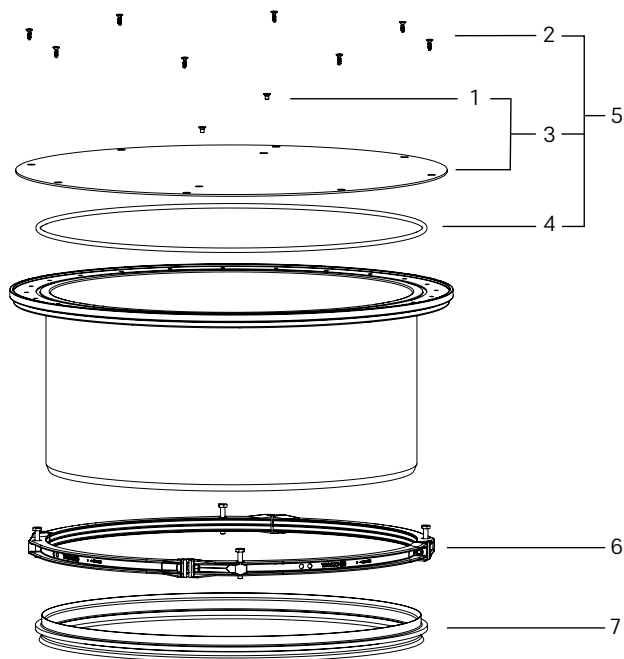


Upper sections for engineering chamber system

Upper section with cover plate Ø 800 round, class K3

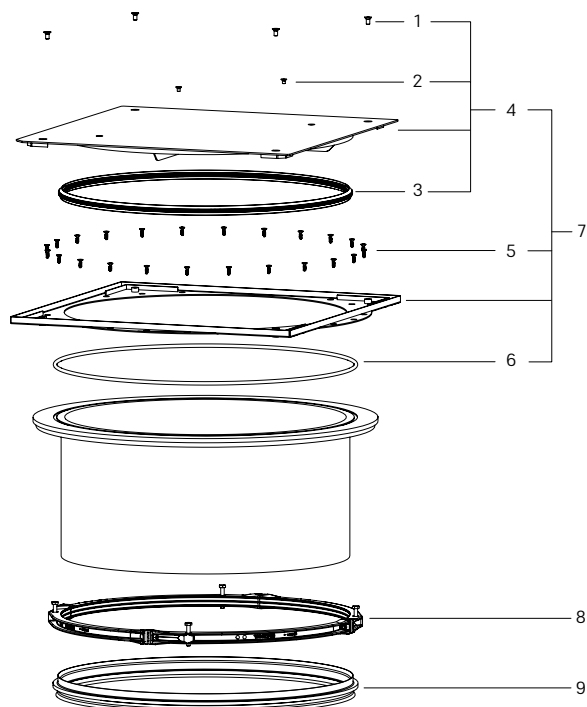
Art. no. 874 01 81



Item	Designation	Art. no.
1	Set of 2 countersunk screws M8 × 12, A4	680 661
2	Set of 8 screws, for upper section, K80 × 22, A2	680 664
3	Cover plate, round, K 3, incl. 2 screws	680 660
4	Seal for upper section, Ø 870 mm	680 655
5	Cover plate, round, K 3, incl. 10 screws, seal	680 659
6	Clamping ring for upper sections, Ø 800 mm	680 568
7	Seal for chamber module Ø 1000, with access opening Ø 800 mm	680 375

Upper section with cover plate Ø 800, class A/L 15

Art. no. 874 01 77



Item	Designation	Art. no.
1	Set of 4 countersunk screws M10 × 20, A4	680 663
2	Set of 2 countersunk screws M8 × 12, A4	680 661
3	Seal for cover plate Ø 840 mm	680 653
4	Cover plate L 15, incl. 6 screws, seal	680 662
5	Set of 24 screws for upper section, K80 × 22, A2	680 654
6	Seal for upper section, Ø 870 mm	680 655
7	Cover plate L 15, incl. 30 screws, seal	680 658
8	Clamping ring for upper sections, Ø 800 mm	680 568
9	Seal for chamber module Ø 1000, with access opening Ø 800 mm	680 375