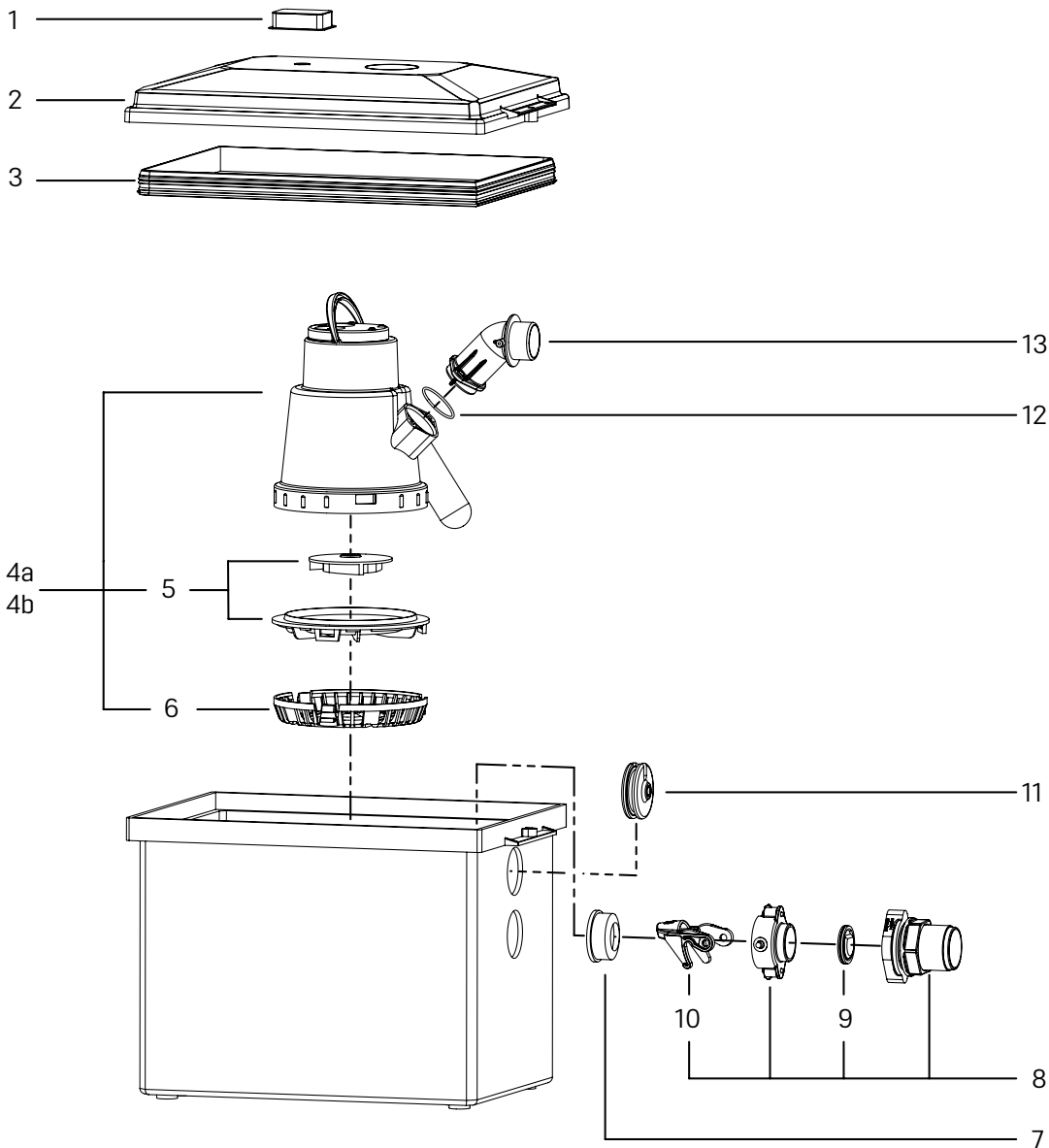


Lifting station *Minilift S*

Free-standing installation



Item	Designation	Art. no.
1	Activated carbon filter with fixing clamp	27 208
2	Cover with polymer screws and knurled nuts	28 036
3	Seal for cover	680 019
4a	Replacement pump KTP 300	28 836
4b	Replacement pump KTP 300 resistant	680 954
5	Impeller KTP 300, with intake cover	28 039
6	Intake cage with push-fit fastener, for KTP 300	680 013

Item	Designation	Art. no.
7	Pump seal Ø 40	680 020
8	Pump locking set, Mono, with one-handed closure	28 031
9	Non-return flap	27 207
10	One-handed closure for backflow preventer	680 018
11	Cable accessories, seal for <i>Minilift</i>	680 021
12	Seal, O-ring for pressure pipe connection	680 014
13	pressure pipe connection for pump, <i>Minilift</i>	680 017