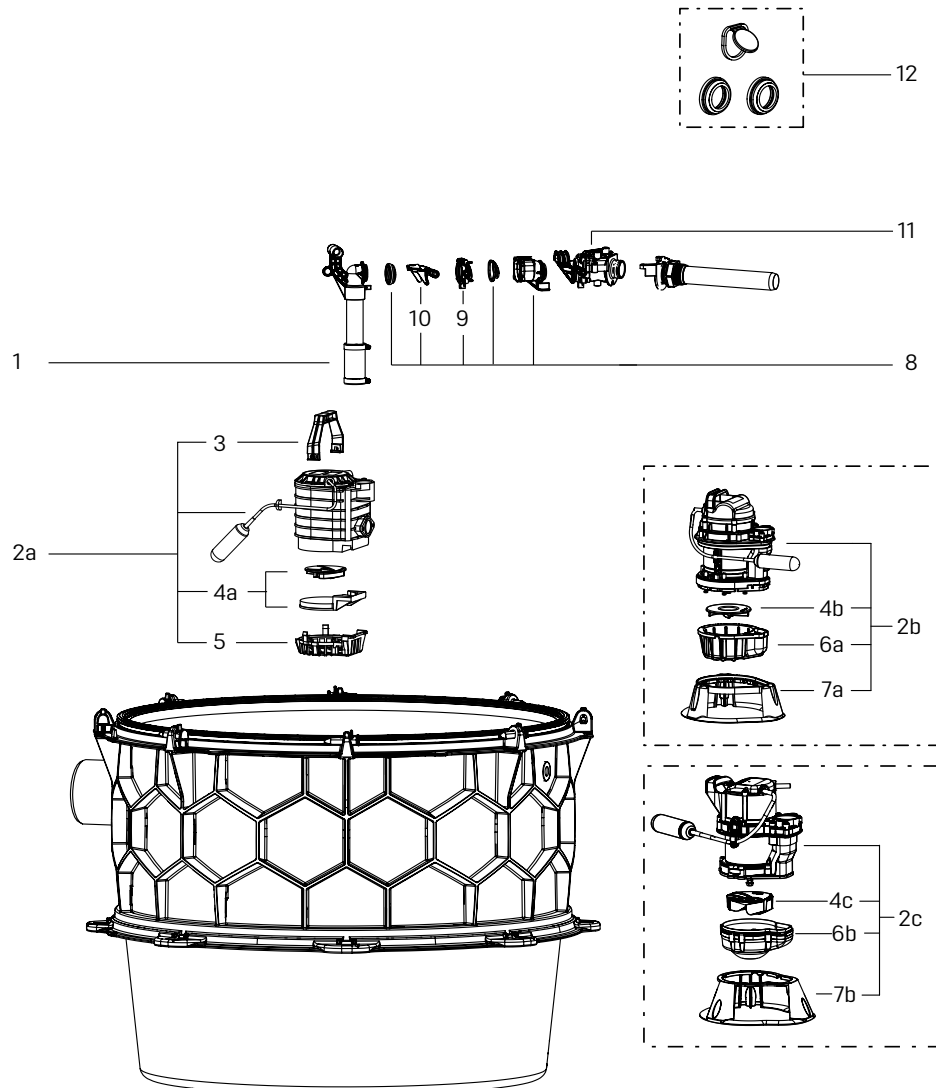


# Pumping station *Aqualift S XL Mono* in the engineering chamber system with float switch, installation in the ground, beginning model year 01/2017



Item	Designation	Art. no.
1	Riser for pumping station, engineering chamber system	680 742
2	Replacement pump	
2a	KTP 500	*
2b	GTF 1200 with float switch for pumping station	680 594
2c	GTF 600, with float switch	680 880
3	Pump handle for submersible pump KTP 500	680 007
4	Impeller	
4a	for KTP 500, with intake cover	28 038
4b	for GTF 1200, ball passage 30 mm, without spiral housing	680 366
4c	for GTF 600, free ball passage 30 mm	680 887

Item	Designation	Art. no.
5	Intake cage with push-fit fastener, for KTP 500	680 004
6	Spiral housing for GTF 1200, ball passage 30 mm	
6a	for GTF 1200, ball passage 30 mm	680 363
6b	for GTF 600, free ball passage 30 mm	680 888
7a	Pump stand for pumping stations <i>Aqualift S</i>	680 362
7b	Pump stand GTF 600, free ball passage 30 mm	680 889
8	Flap holder with non-return flap	680 457
9	Pump connection suitable for pumping stations, beginning 01/2016	680 476
10	One-handed closure for backflow preventer	680 018
11	Threaded connection for <i>Aqualift S Mono</i>	680 479
12	Seal set for <i>Aqualift S</i> Ø 600/1000, Mono	680 490

\* Will be replaced by new pump GTF 600, art. no. 680 880