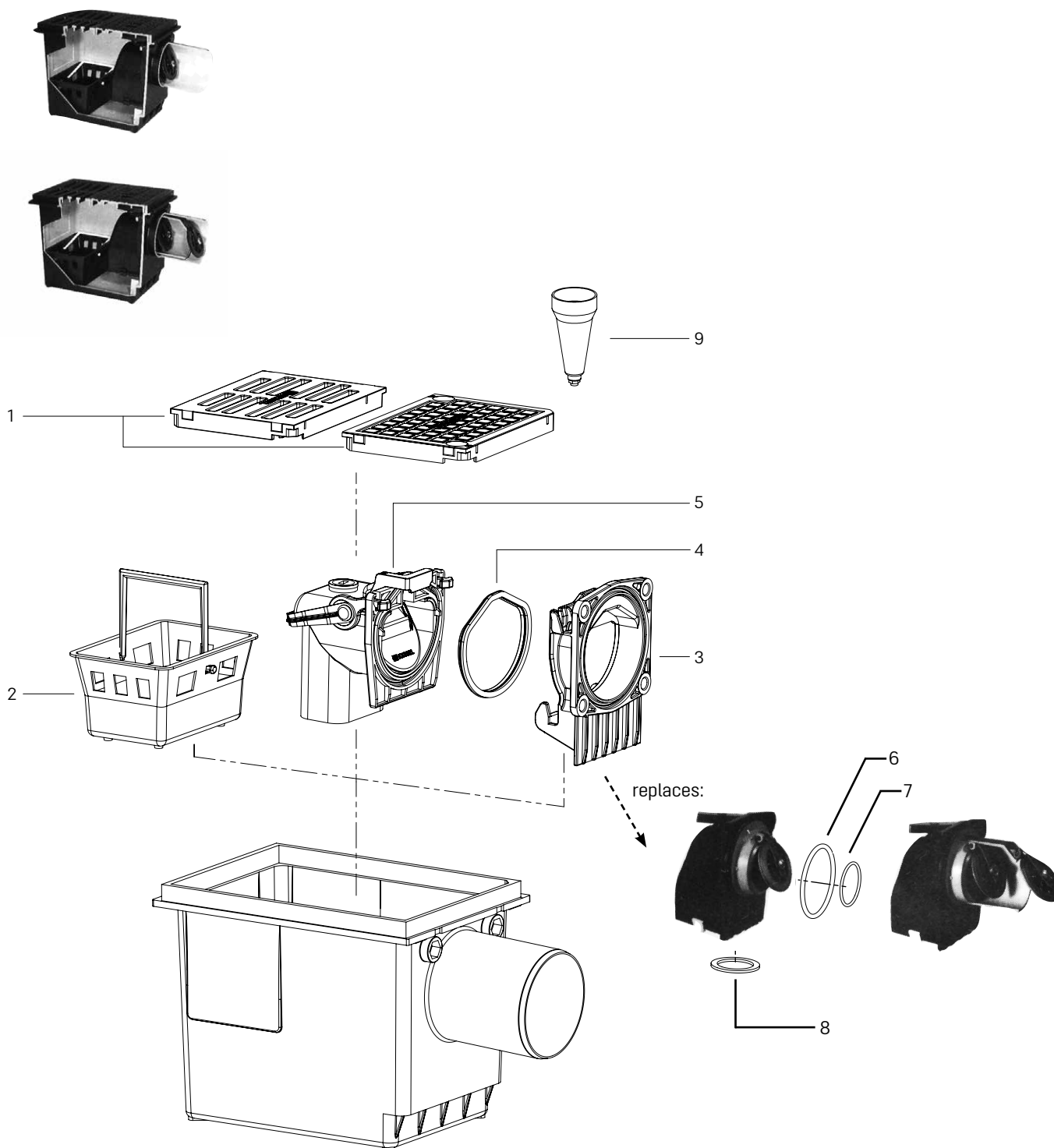


Basement drain *Drehfix*

Installation in the floor slab, up to model year 12/2001



Item	Designation	Art. no.
1	Cover plate and slotted grating set, black, Class A 15	680 899
2	Sludge bucket 170 × 120 × 90 mm	27 108
3	Adapter for retrofitting 27 603 and 27 605	27 608
4	Lip seal Ø 117 mm	680 280
5	Backwater valve module for basement drains with two flaps	27 603

Item	Designation	Art. no.
6	Rolling ring seal, Ø 110	680 001
7	Seal for flap	680 005
8	Flat seal	680 000
9	Test funnel with seal	70 214