

Floor drain *The Ultraflat 79*

with *Variofix* shallow bed upper section with design cover *Kessel*

System 125



Made in ABS

Specifications:

With lateral outlet, removable odour trap in the upper section, sealing water height 50 mm according to EN 1253-1 and with non-mounted waterproofing membrane according to EN 1253-1 and DIN 18534-1-W3-I.

Drainage capacity in l/sec
with 20 mm / 10 mm threshold
Ø 50: 1.45 l/sec / 1.25 l/sec.

Installation height 129 – 184 mm.

Installation area 350 × 350 mm

Cover:

Design cover *Kessel* 120 × 120 mm (anti-slip class R9 according to DIN 51130; anti-slip class C according to DIN 51097) and rim made of stainless steel AISI 304 (rim height: 10 – 23 mm), class L 15



Illustration shows Art. no. 44 700.53
with *Lock & Lift* locking system

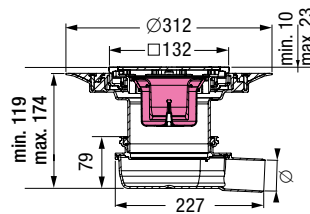


Illustration shows Art. no. 44 700.52, 44 700.53

Outer diameter Ø (mm)

Art. no.

With design cover, without *Lock & Lift* locking system

Ø 50

44 700.52

With design cover, with *Lock & Lift* locking system

Ø 50

44 700.53