

## Bathroom drain *The Superflat* with *Variofix* shallow bed upper section

Made in PP, with removable odour trap, sound-absorbing, flexible lateral outlet 2.5°, with lateral inlet Ø 40 and fixed lip seal.

Drainage capacity 0.8 l/sec flow rate.

Installation area 260×180 mm

With *Variofix* shallow bed upper section in ABS, with non-mounted waterproofing membrane according to EN 1253-1 and DIN 18534-1-W3-I for shallow bed sealing

### Cover:

Design cover *Oval* 120×120 mm and rim made of stainless steel AISI 304, for tile thicknesses 8 – 21 mm, class L 15 or standard slotted cover 95×95 mm made of stainless steel AISI 304, for tile thicknesses 6 – 14 mm, class K 3



Illustration shows Art. no. 42 701.54 with *Lock & Lift* System

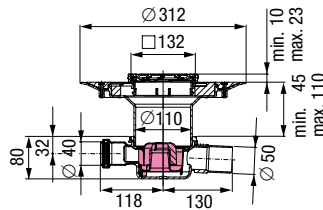


Illustration shows Art. no. 42 701.54

System 100



### Lateral outlet

Outer diameter Ø (mm)	Art. no.
Ø 50	42 701.54
Ø 50	42 701.50

With design cover *Oval* with *Lock & Lift* locking system

Ø 50 42 701.54

With standard slotted cover

Ø 50 42 701.50

## Bathroom drain *The Superflat* with glue flange

Made in PP, with removable odour trap, sound-absorbing, flexible lateral outlet 2.5°, with lateral inlet Ø 40 and fixed lip seal.

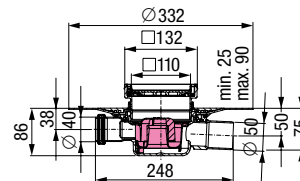
Drainage capacity 0.8 l/sec flow rate.

Installation area 260×180 mm

With upper section in ABS, with glue flange and counter flange

### Cover:

Recessed polymer drain cover for on-site tiling 110×110 mm and rim made of stainless steel AISI 304, for tile thicknesses up to 10 mm, with locking system



System 100



Outer diameter Ø (mm)	Art. no.
Ø 50	42 701.95

Ø 50 42 701.95

## Bathroom drain *The Superflat* with connection flange

Made in PP, with removable odour trap, sound-absorbing, flexible lateral outlet 2.5°, with lateral inlet Ø 40 and fixed lip seal.

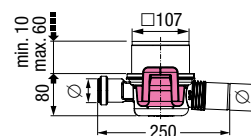
Drainage capacity 0.8 l/sec flow rate.

Installation area 260×180 mm

With upper section in ABS

### Cover:

Slotted cover 100×100 mm made of stainless steel AISI 304, min. installation height 90 mm, class K 3



System 100



Outer diameter Ø (mm)	Art. no.
Ø 50	42 701.20

Ø 50 42 701.20