

Accessories

System 125

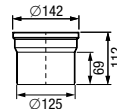
Floor drains *Ferrofix*

Extension sections with connection flange

Art. no.

without lateral inlet

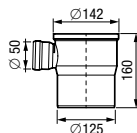
Compatibility: For floor drain *Ferrofix* System 125
Material: Stainless steel AISI 304
Inclusive: Lip seal



54 900

with lateral inlet Ø 50

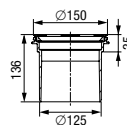
Compatibility: For floor drain *Ferrofix* System 125
Material: Stainless steel AISI 304
Inclusive: Lip seal



54 902

without lateral inlet

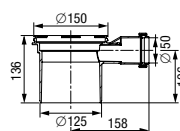
Compatibility: For floor drain *Ferrofix* System 125
Material: PP
Inclusive: Lip seal



48 987

with lateral inlet Ø 50

Compatibility: For floor drain *Ferrofix* System 125
Material: PP
Inclusive: Lip seal



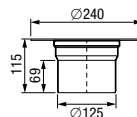
48 989

Extension sections with glue flange

Art. no.

without lateral inlet

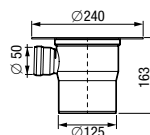
Compatibility: For floor drain *Ferrofix* System 125
Material: Stainless steel AISI 304
Inclusive: Lip seal



54 901

with lateral inlet Ø 50

Compatibility: For floor drain *Ferrofix* System 125
Material: Stainless steel AISI 304
Inclusive: Lip seal



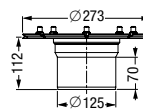
54 903

Extension sections with pressure sealing flange

Art. no.

without lateral inlet

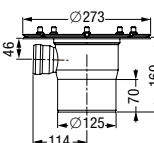
Compatibility: For floor drain *Ferrofix* System 125
Material: Stainless steel AISI 304
Version: Flange width 70 mm



54 187

with lateral inlet Ø 50

Compatibility: For floor drain *Ferrofix* System 125
Material: Stainless steel AISI 304
Version: Flange width 70 mm
Inclusive: Plug-in sleeve Ø 50/40



54 189