

Grease separator *EasyClean* ground Direct NS 2 – 4 for underground installation



EN 1825 DIN 4040-100

Made of polyethylene

Installation

in frost-free depth

- Resistant when installed in the groundwater up to 500 mm
- A load distribution plate must be provided for class D

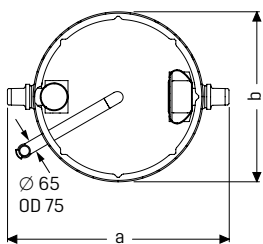
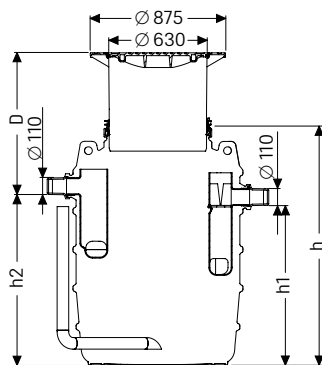
Consisting of:

Upper section made of polymer, continuous height and level adjustment, with cover class A / B, D (class D with *Lock & Lift* function) in accordance with EN 124 made of cast iron, sealed odour-tight, incl. lift-out key

Delivery: System completely assembled

➤ **Accessories:** Sampling chamber, extension section, *SonicControl* (NS 2 and NS 4) page 382 – 385, pumping stations see chapter "3"

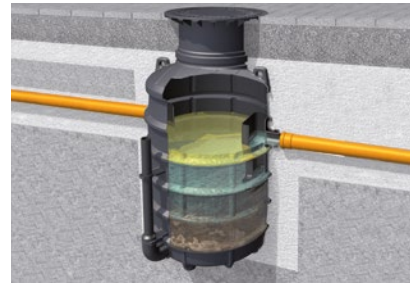
➤ **Technical note:** page 379



NS	Ø (mm)	a (mm)	b (mm)	h ¹⁾ (mm)	h1 (mm)	h2 (mm)	Weight (kg)	Sludge trap (l)	Water and grease (l)	Grease storage (l)	Total (l)
2	110	1380	1106	1300	790	860	120	200	370	120	570
4	110	1380	1106	1550	1040	1110	130	400	370	160	770

¹⁾ Valued for Type 80 separators. For Type 120 h* = h + 250 mm.

Ø = Outer diameter D = Installation depth



Underground installation frost-free depth 800 mm

NS	Installation depth D in mm	Art. no.
Cover class A / B, direction of flow left		
NS 2	515 - 975	93 002.80B-DL
NS 4	515 - 975	93 004.80B-DL
Cover class A / B, direction of flow right		
NS 2	515 - 975	93 002.80B-DR
NS 4	515 - 975	93 004.80B-DR
Cover class D, direction of flow left		
NS 2	515 - 975	93 002.80D-DL
NS 4	515 - 975	93 004.80D-DL
Cover class D, direction of flow right		
NS 2	515 - 975	93 002.80D-DR
NS 4	515 - 975	93 004.80D-DR

Underground installation frost-free depth 1200 mm

NS	Installation depth D in mm	Art. no.
Cover class A / B, direction of flow left		
NS 2	765 - 1225	93 002.120B-DL
NS 4	765 - 1225	93 004.120B-DL
Cover class A / B, direction of flow right		
NS 2	765 - 1225	93 002.120B-DR
NS 4	765 - 1225	93 004.120B-DR
Cover class D, direction of flow left		
NS 2	765 - 1225	93 002.120D-DL
NS 4	765 - 1225	93 004.120D-DL
Cover class D, direction of flow right		
NS 2	765 - 1225	93 002.120D-DR
NS 4	765 - 1225	93 004.120D-DR

