

Grease separator *EasyClean* ground Standard NS 7 – 35 for underground installation



EN 1825 DIN 4040-100

Made of polyethylene

Installation

in frost-free depth

- Installation is possible with groundwater up to the upper edge of the tank (UET)
- A load distribution plate must be provided for class D
- Class D = 700 mm ≤ DEC ≤ 1500 mm
Class A/ B = 700 mm ≤ DEC ≤ 1800 mm
- Minimum installation depth achieved by sawing the upper section as required

Consisting of:

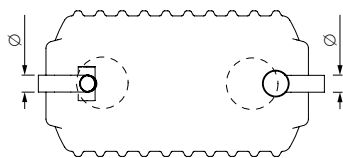
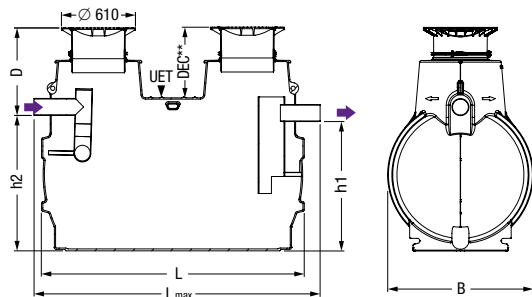
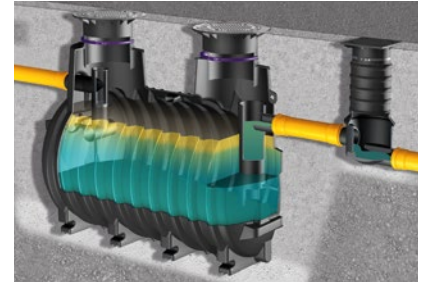
Upper section made of polymer, height and level adjustment, with cover class A/B, D (class D with *Lock & Lift* function) in accordance with EN 124, made of cast iron (can be driven over by cars and trucks), sealed odour-tight, incl. lift-out key

Delivery: System completely assembled

Note: Further nominal sizes on request

➤ **Accessories:** Sampling chamber, extension section, direct disposal, *SonicControl* page 382 – 385, pumping stations see chapter "3"

➤ **Technical note:** page 379



**DEC = Depth of earth coverage

NS	Ø (mm)	L (mm)	B (mm)	h1 (mm)	h2 (mm)	Sludge trap (l)	Water and grease (l)	Grease storage (l)	Total (l)	D-DEC	Lmax
7	160	2390	1200	1030	1100	700	1100	280	1800	220	2540
10	160	2910	1200	1030	1100	1000	1600	400	2600	220	3060
15	200	2590	1760	1550	1620	1500	2800	600	4300	185	2780
20	200	3110	1760	1550	1620	2000	3800	800	5800	185	3300
25	200	3470	2010	1550	1650	2500	5300	2000	7800	480	3760
30	250	3470	2010	1550	1650	3000	4800	2000	7800	480	3760
35	250	3470	2010	1700	1800	3500	4800	2000	8300	330	3760

Ø = Outer diameter D = Installation depth

NS	Installation depth D in mm	Weight in kg	Art. no.
<i>Cover class A / B</i>			
NS 7	705 - 1200	315	93 007/120B
NS 10	705 - 1200	340	93 010/120B
NS 15	730 - 1225	435	93 015/120B
NS 20	730 - 1225	490	93 020/120B
NS 25	765 - 1260	665	93 925/120B
NS 30	765 - 1260	665	93 930/120B
NS 35	615 - 1110	665	93 935/120B

<i>Cover class D, with Lock & Lift function</i>			
NS 7	705 - 1200	450	93 007/120D
NS 10	705 - 1200	480	93 010/120D
NS 15	730 - 1225	630	93 015/120D
NS 20	730 - 1225	670	93 020/120D
NS 25	765 - 1260	765	93 925/120D
NS 30	765 - 1260	765	93 930/120D
NS 35	615 - 1110	765	93 935/120D

Extended version for deeper installation with extension section Ø 800 mm

NS	Installation depth D in mm	Weight in kg	Art. no.
<i>Cover class A / B</i>			
NS 7	1085 - 1765	345	93 007/170B
NS 10	1085 - 1765	370	93 010/170B
NS 15	1095 - 1780	465	93 015/170B
NS 20	1095 - 1780	520	93 020/170B
NS 25	1120 - 1800	695	93 925/170B
NS 30	1120 - 1800	695	93 930/170B
NS 35	970 - 1650	695	93 935/170B

<i>Cover class D, with Lock & Lift function</i>			
NS 7	1085 - 1765	480	93 007/170D
NS 10	1085 - 1765	510	93 010/170D
NS 15	1095 - 1780	660	93 015/170D
NS 20	1095 - 1780	700	93 020/170D
NS 25	1120 - 1800	795	93 925/170D
NS 30	1120 - 1800	795	93 930/170D
NS 35	970 - 1650	795	93 935/170D

